

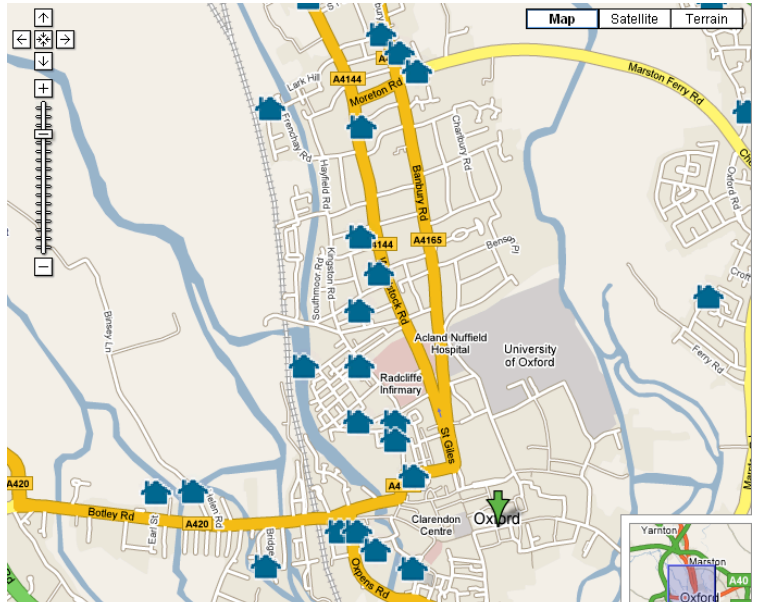
## Custom Online Maps

Interactive online maps allow you to **annotate a map or Arial photo** of your local area.

You might use this to **share your photos of the local area, provide local information or find out what people think** of facilities and activities available in the area.

You can **share your customized map** on the web or through a **3D mapping program**.

### With Google Maps ([maps.google.com](http://maps.google.com))



### Getting Started

Visit <http://maps.google.com> and select 'My Maps'. Follow the instructions below to sign in and get started

#### 1) Select My Maps and create a new map

6) Open your map in 3D using Google Earth

3) Use the drawing tools to annotate the map. You can include text and even embed photos and videos.

4) Select collaborate and choose the collaboration settings for your map

5) Share the map link with others so they can add their annotations

2) Give your map a title and description



This work was developed by [tim@practicalparticipation.co.uk](mailto:tim@practicalparticipation.co.uk) and is licenced under the Creative Commons Attribution-Share Alike 2.0 UK: England & Wales License. To view a copy of this licence, visit <http://creativecommons.org/licenses/by-sa/2.0/uk/>

**Summary:** You may freely use, adapt and share this document providing you credit Practical Participation including our URL: ([www.practicalparticipation.co.uk](http://www.practicalparticipation.co.uk)) and use this licence for your work. Please also let us know about any adaptations or derivative works. **Practical Participation offer training & consultancy in using social media tools and strategies in participation projects.** This series of Getting Started guides are designed to offer a flavour of the tools available.